



Certificate of Analysis

Powered by Confident Cannabis

Premium Jane

Scottsdale, AZ 85251
 (844)259-5092
 email: info@premiumjane.com

Sample: 2202DBL0117.0923

METRC Sample:
 Batch #: SLV0122-03

Strain: Salve Coc Butt Euc 1500mg CBD
 Ordered: 02/14/2022; Sampled: 02/14/2022; Completed: 02/17/2022

Salve Coc Butt Euc 1500mg CBD

Topical, Salve, Hexane



Pesticides



Microbials



Mycotoxins



Heavy Metals



Foreign Matter



Solvents

Terpenes

Analyzed by 300.13 GC/FID and GC/MS



547.316 mg/unit
 Total Terpenes

Compound	LOQ	Mass	Mass	Relative Concentration
	mg/unit	mg/unit	mg/g	
Eucalyptol	5.034	354.697	6.256	
Linalool	5.034	81.152	1.431	
δ-Limonene	5.034	80.089	1.413	
p-Cymene	5.034	15.979	0.282	
α-Pinene	5.034	8.634	0.152	
trans-Ocimene	1.762	6.765	0.119	
α-Bisabolol	5.034	<LOQ	<LOQ	
α-Humulene	5.034	<LOQ	<LOQ	
α-Terpinene	5.034	<LOQ	<LOQ	
β-Caryophyllene	5.034	<LOQ	<LOQ	
β-Myrcene	5.034	<LOQ	<LOQ	
β-Pinene	5.034	<LOQ	<LOQ	
Camphene	5.034	<LOQ	<LOQ	
Caryophyllene Oxide	5.034	<LOQ	<LOQ	
cis-Nerolidol	3.272	<LOQ	<LOQ	
cis-Ocimene	3.272	<LOQ	<LOQ	
δ-3-Carene	5.034	<LOQ	<LOQ	
γ-Terpinene	5.034	<LOQ	<LOQ	
Geraniol	5.034	<LOQ	<LOQ	
Guaiol	5.034	<LOQ	<LOQ	
Isopulegol	5.034	<LOQ	<LOQ	
Terpinolene	5.034	<LOQ	<LOQ	
trans-Nerolidol	1.762	<LOQ	<LOQ	

Cannabinoid Relative Concentration

Analyzed by 300.18 UHPLC/PDA

0.053%
 Δ9-THC + Δ8-THC

1,447.719 mg/unit
 CBD

Not Tested

pH: NT
 Aw: NT

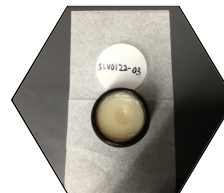
2,005.279 mg/unit
 Total Cannabinoids

Not Tested
 Homogeneity

Compound	LOQ	Mass	Mass	Relative Concentration
	mg/unit	mg/unit	mg/g	
CBC	3.072	44.780	0.790	
CBCa	3.072	<LOQ	<LOQ	
CBD	3.072	1447.719	25.533	
CBDa	3.072	<LOQ	<LOQ	
CBDV	3.072	11.876	0.209	
CBDVa	3.072	<LOQ	<LOQ	
CBG	3.072	470.621	8.300	
CBGa	3.072	<LOQ	<LOQ	
CBL	3.072	<LOQ	<LOQ	
CBN	3.072	<LOQ	<LOQ	
Δ8-THC	3.072	<LOQ	<LOQ	
Δ9-THC	3.072	30.283	0.534	
THCa	3.072	<LOQ	<LOQ	
THCV	3.072	<LOQ	<LOQ	
THCVa	3.072	<LOQ	<LOQ	

1 Unit = Salve Coc Butt Euc 1500mg CBD, 56.7g

Total THC = 0.877 x THC-A + Δ9-THC + Δ8-THC; Total CBD = CBDa * 0.877 + CBD



Benjamin G.M. Chew
 Benjamin G.M. Chew, Ph.D.
 Laboratory Director

Glen Marquez
 Glen Marquez
 Quality Control



4439 Polaris Ave
 Las Vegas, NV
 (702) 728-5180
 www.dblabslv.com

This report is considered highly confidential and the sole property of the customer. DB Labs will not discuss any part of this study with personnel other than those authorized by the client. The results described in this report only apply to the samples analyzed. The reported result is based on a sample weight with the applicable moisture content for that sample. LOQ = Limit of Quantitation. Pesticide LOQ = Instrument Limit of Quantitation, NA = Not Analyzed, ND = Not Detected, NR = Not Reported, NT = Not Tested. PGR = Plant Growth Regulator. Unless otherwise stated all quality control samples performed within specifications established by the Laboratory. This product has been tested by DB Labs, LLC (MME# 61887736101164525768) using valid testing methodologies and a quality system as required by Nevada state law. Edibles are picked up prior to final packaging unless otherwise stated. Values reported relate only to the product tested. The uncertainty of measurement associated with the measurement result reported in this certificate is available from the organization upon request. DB Labs makes no claims as to the efficacy, safety or other risks associated with any detected or non-detected levels of any compounds reported herein. This Certificate shall not be reproduced except in full, without the written approval of DB Labs.



Certificate of Analysis

Powered by Confident Cannabis

Premium Jane

Scottsdale, AZ 85251
 (844)259-5092
 email: info@premiumjane.com

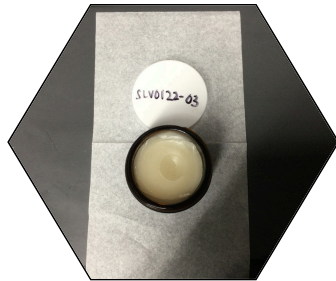
Sample: 2202DBL0117.0923

METRC Sample:
 Batch #: SLV0122-03

Strain: Salve Coc Butt Euc 1500mg CBD
 Ordered: 02/14/2022; Sampled: 02/14/2022; Completed: 02/17/2022

Salve Coc Butt Euc 1500mg CBD

Topical, Salve, Hexane



Cannabinoids



Cannabinoids

0.053%

1,447.719 mg/unit

Δ9-THC + Δ8-THC

CBD

2,005.279 mg/unit

NT

Total Cannabinoids

Moisture

1 Unit = Salve Coc Butt Euc 1500mg CBD, 56.7g

Cannabinoid Profile

Analyzed by 300.18 UHPLC/PDA

Cannabinoid	Mass (mg/unit)	Mass (mg/g)	LOQ (mg/unit)
CBC	44.780	0.790	3.072
CBCa	<LOQ	<LOQ	3.072
CBD	1447.719	25.533	3.072
CBDa	<LOQ	<LOQ	3.072
CBDV	11.876	0.209	3.072
CBDVa	<LOQ	<LOQ	3.072
CBG	470.621	8.300	3.072
CBGa	<LOQ	<LOQ	3.072
CBL	<LOQ	<LOQ	3.072
CBN	<LOQ	<LOQ	3.072
Δ8-THC	<LOQ	<LOQ	3.072
Δ9-THC	30.283	0.534	3.072
THCa	<LOQ	<LOQ	3.072
THCV	<LOQ	<LOQ	3.072
THCVa	<LOQ	<LOQ	3.072
Total THC	30.283	0.534	
Total CBD	1,447.719	25.533	
Total	2005.279	35.366	



Benjamin G.M. Chew, Ph.D.
 Benjamin G.M. Chew, Ph.D.
 Laboratory Director

Glen Marquez
 Glen Marquez
 Quality Control



4439 Polaris Ave
 Las Vegas, NV
 (702) 728-5180
 www.dblabslv.com

This report is considered highly confidential and the sole property of the customer. DB Labs will not discuss any part of this study with personnel other than those authorized by the client. The results described in this report only apply to the samples analyzed. The reported result is based on a sample weight with the applicable moisture content for that sample. LOQ = Limit of Quantitation. Pesticide LOQ = Instrument Limit of Quantitation. NA = Not Analyzed. ND = Not Detected. NR = Not Reported. NT = Not Tested. PGR = Plant Growth Regulator. Unless otherwise stated all quality control samples performed within specifications established by the Laboratory. This product has been tested by DB Labs, LLC (MME# 61887736101164525768) using valid testing methodologies and a quality system as required by Nevada state law. Edibles are picked up prior to final packaging unless otherwise stated. Values reported relate only to the product tested. The uncertainty of measurement associated with the measurement result reported in this certificate is available from the organization upon request. DB Labs makes no claims as to the efficacy, safety or other risks associated with any detected or non-detected levels of any compounds reported herein. This Certificate shall not be reproduced except in full, without the written approval of DB Labs.



Certificate of Analysis

Powered by Confident Cannabis

Premium Jane

Scottsdale, AZ 85251
(844)259-5092
email: info@premiumjane.com

Sample: 2202DBL0117.0923

METRC Sample:
Batch #: SLV0122-03

Strain: Salve Coc Butt Euc 1500mg CBD
Ordered: 02/14/2022; Sampled: 02/14/2022; Completed: 02/17/2022

Salve Coc Butt Euc 1500mg CBD


Topical, Salve, Hexane



Microbials Pass
Analyzed by 300.1 Plating/QPCR

Quantitative Analysis	LOQ	Limit	Mass	Status
	CFU/g	CFU/g	CFU/g	
Aerobic Bacteria	9	100000	<LOQ	Pass
Bile-Tolerant Gram-Negative Bacteria	90	1000	<LOQ	Pass
Coliforms	90	1000	<LOQ	Pass
Yeast & Mold	9	10000	<LOQ	Pass

Qualitative Analysis	Detected or Not Detected	Status
E. Coli	Not Detected	Pass
Salmonella	Not Detected	Pass



Foreign Matter Pass



TNC = Too Numerous to Count



Benjamin G.M. Chew
Benjamin G.M. Chew, Ph.D.
Laboratory Director

Glen Marquez
Glen Marquez
Quality Control

This report is considered highly confidential and the sole property of the customer. DB Labs will not discuss any part of this study with personnel other than those authorized by the client. The results described in this report only apply to the samples analyzed. The reported result is based on a sample weight with the applicable moisture content for that sample. LOQ = Limit of Quantitation. Pesticide LOQ = Instrument Limit of Quantitation, NA = Not Analyzed, ND = Not Detected, NR = Not Reported, NT = Not Tested. PGR = Plant Growth Regulator. Unless otherwise stated all quality control samples performed within specifications established by the Laboratory. This product has been tested by DB Labs, LLC (MME# 61887736101164525768) using valid testing methodologies and a quality system as required by Nevada state law. Edibles are picked up prior to final packaging unless otherwise stated. Values reported relate only to the product tested. The uncertainty of measurement associated with the measurement result reported in this certificate is available from the organization upon request. DB Labs makes no claims as to the efficacy, safety or other risks associated with any detected or non-detected levels of any compounds reported herein. This Certificate shall not be reproduced except in full, without the written approval of DB Labs.



4439 Polaris Ave
Las Vegas, NV
(702) 728-5180
www.dblabslv.com



Certificate of Analysis

Powered by Confident Cannabis

Premium Jane

Scottsdale, AZ 85251
(844)259-5092
email: info@premiumjane.com

Sample: 2202DBL0117.0923

METRC Sample:
Batch #: SLV0122-03

Strain: Salve Coc Butt Euc 1500mg CBD
Ordered: 02/14/2022; Sampled: 02/14/2022; Completed: 02/17/2022

Salve Coc Butt Euc 1500mg CBD

Topical, Salve, Hexane



Pesticides/Plant Growth Regulators*

Analyzed by 300.9 LC/MS/MS and GC/MS/MS

Pass

Compound	LOQ PPB	Limit PPB	Mass PPB	Status
Abamectin	10	0	<LOQ	Pass
Acequinocyl	10	4000	<LOQ	Pass
Bifenazate	10	400	<LOQ	Pass
Bifenthrin	10	0	<LOQ	Pass
Cyfluthrin	10	2000	<LOQ	Pass
Cypermethrin	10	0	<LOQ	Pass
Daminozide*	10	0	<LOQ	Pass
Dimethomorph	10	2000	<LOQ	Pass
Etoxazole	10	400	<LOQ	Pass
Fenhexamid	10	1000	<LOQ	Pass
Flonicamid	10	1000	<LOQ	Pass
Fludioxonil	10	500	<LOQ	Pass
Imidacloprid	10	500	<LOQ	Pass
Myclobutanil	10	400	<LOQ	Pass
Paclobutrazol*	10	0	<LOQ	Pass
Piperonyl Butoxide	10	3000	138	Pass
Plant Growth Regulators	10	50	<LOQ	Pass
Pyrethrins	10	2000	<LOQ	Pass
Quintozene	10	800	<LOQ	Pass
Spinetoram	10	1000	<LOQ	Pass
Spinosad	10	1000	<LOQ	Pass
Spirotetramat	10	1000	<LOQ	Pass
Thiamethoxam	10	400	<LOQ	Pass
Trifloxystrobin	10	1000	<LOQ	Pass



Benjamin G.M. Chew
Benjamin G.M. Chew, Ph.D.
Laboratory Director

Glen Marquez
Glen Marquez
Quality Control

This report is considered highly confidential and the sole property of the customer. DB Labs will not discuss any part of this study with personnel other than those authorized by the client. The results described in this report only apply to the samples analyzed. The reported result is based on a sample weight with the applicable moisture content for that sample. LOQ = Limit of Quantitation. Pesticide LOQ = Instrument Limit of Quantitation, NA = Not Analyzed, ND = Not Detected, NR = Not Reported, NT = Not Tested. PGR = Plant Growth Regulator. Unless otherwise stated all quality control samples performed within specifications established by the Laboratory. This product has been tested by DB Labs, LLC (MME# 61887736101164525768) using valid testing methodologies and a quality system as required by Nevada state law. Edibles are picked up prior to final packaging unless otherwise stated. Values reported relate only to the product tested. The uncertainty of measurement associated with the measurement result reported in this certificate is available from the organization upon request. DB Labs makes no claims as to the efficacy, safety or other risks associated with any detected or non-detected levels of any compounds reported herein. This Certificate shall not be reproduced except in full, without the written approval of DB Labs.



4439 Polaris Ave
Las Vegas, NV
(702) 728-5180
www.dblabslv.com



Certificate of Analysis

Powered by Confident Cannabis

Premium Jane

Scottsdale, AZ 85251
(844)259-5092
email: info@premiumjane.com

Sample: 2202DBL0117.0923

METRC Sample:
Batch #: SLV0122-03

Strain: Salve Coc Butt Euc 1500mg CBD
Ordered: 02/14/2022; Sampled: 02/14/2022; Completed: 02/17/2022

Salve Coc Butt Euc 1500mg CBD

Topical, Salve, Hexane



Residual Solvents

Analyzed by 300.13 GC/FID and GC/MS

Pass

Compound	LOQ	Limit	Mass	Status
	PPM	PPM	PPM	
Butanes	57	500	<LOQ	Pass
Ethanol	57		<LOQ	Tested
Heptane	57	500	<LOQ	Pass
Propane	57	500	<LOQ	Pass



Benjamin G.M. Chew, Ph.D.
Laboratory Director

Glen Marquez
Quality Control

This report is considered highly confidential and the sole property of the customer. DB Labs will not discuss any part of this study with personnel other than those authorized by the client. The results described in this report only apply to the samples analyzed. The reported result is based on a sample weight with the applicable moisture content for that sample. LOQ = Limit of Quantitation. Pesticide LOQ = Instrument Limit of Quantitation, NA = Not Analyzed, ND = Not Detected, NR = Not Reported, NT = Not Tested. PGR = Plant Growth Regulator. Unless otherwise stated all quality control samples performed within specifications established by the Laboratory. This product has been tested by DB Labs, LLC (MME# 61887736101164525768) using valid testing methodologies and a quality system as required by Nevada state law. Edibles are picked up prior to final packaging unless otherwise stated. Values reported relate only to the product tested. The uncertainty of measurement associated with the measurement result reported in this certificate is available from the organization upon request. DB Labs makes no claims as to the efficacy, safety or other risks associated with any detected or non-detected levels of any compounds reported herein. This Certificate shall not be reproduced except in full, without the written approval of DB Labs.



4439 Polaris Ave
Las Vegas, NV
(702) 728-5180
www.dblabslv.com



Certificate of Analysis

Powered by Confident Cannabis

Premium Jane

Scottsdale, AZ 85251
(844)259-5092
email: info@premiumjane.com

Sample: 2202DBL0117.0923

METRC Sample:
Batch #: SLV0122-03

Strain: Salve Coc Butt Euc 1500mg CBD
Ordered: 02/14/2022; Sampled: 02/14/2022; Completed: 02/17/2022

Salve Coc Butt Euc 1500mg CBD

Topical, Salve, Hexane



Mycotoxins

Analyzed by 300.2 Elisa

Pass

Mycotoxin	LOQ	Limit	Mass	Status
	PPB	PPB	PPB	
Aflatoxins	4.0	20.0	<LOQ	Pass
Ochratoxin A	2.0	20.0	5.1	Pass



Benjamin G.M. Chew
Benjamin G.M. Chew, Ph.D.
Laboratory Director

Glen Marquez
Glen Marquez
Quality Control

This report is considered highly confidential and the sole property of the customer. DB Labs will not discuss any part of this study with personnel other than those authorized by the client. The results described in this report only apply to the samples analyzed. The reported result is based on a sample weight with the applicable moisture content for that sample. LOQ = Limit of Quantitation. Pesticide LOQ = Instrument Limit of Quantitation, NA = Not Analyzed, ND = Not Detected, NR = Not Reported, NT = Not Tested. PGR = Plant Growth Regulator. Unless otherwise stated all quality control samples performed within specifications established by the Laboratory. This product has been tested by DB Labs, LLC (MME# 61887736101164525768) using valid testing methodologies and a quality system as required by Nevada state law. Edibles are picked up prior to final packaging unless otherwise stated. Values reported relate only to the product tested. The uncertainty of measurement associated with the measurement result reported in this certificate is available from the organization upon request. DB Labs makes no claims as to the efficacy, safety or other risks associated with any detected or non-detected levels of any compounds reported herein. This Certificate shall not be reproduced except in full, without the written approval of DB Labs.



4439 Polaris Ave
Las Vegas, NV
(702) 728-5180
www.dblabslv.com



Certificate of Analysis

Powered by Confident Cannabis

Premium Jane

Scottsdale, AZ 85251
(844)259-5092
email: info@premiumjane.com

Sample: 2202DBL0117.0923

METRC Sample:
Batch #: SLV0122-03

Strain: Salve Coc Butt Euc 1500mg CBD
Ordered: 02/14/2022; Sampled: 02/14/2022; Completed: 02/17/2022

Salve Coc Butt Euc 1500mg CBD

Topical, Salve, Hexane



Heavy Metals

Analyzed by 300.8 ICP/MS

Pass

Element	LOQ	Limit	Mass	Status
	PPB	PPB	PPB	
Arsenic	53	2000	<LOQ	Pass
Cadmium	53	820	<LOQ	Pass
Lead	53	1200	<LOQ	Pass
Mercury	53	400	<LOQ	Pass



Benjamin G.M. Chew, Ph.D.
Laboratory Director

Glen Marquez
Quality Control



4439 Polaris Ave
Las Vegas, NV
(702) 728-5180
www.dblabslv.com

This report is considered highly confidential and the sole property of the customer. DB Labs will not discuss any part of this study with personnel other than those authorized by the client. The results described in this report only apply to the samples analyzed. The reported result is based on a sample weight with the applicable moisture content for that sample. LOQ = Limit of Quantitation. Pesticide LOQ = Instrument Limit of Quantitation, NA = Not Analyzed. ND = Not Detected. NR = Not Reported. NT = Not Tested. PGR = Plant Growth Regulator. Unless otherwise stated all quality control samples performed within specifications established by the Laboratory. This product has been tested by DB Labs, LLC (MME# 61887736101164525768) using valid testing methodologies and a quality system as required by Nevada state law. Edibles are picked up prior to final packaging unless otherwise stated. Values reported relate only to the product tested. The uncertainty of measurement associated with the measurement result reported in this certificate is available from the organization upon request. DB Labs makes no claims as to the efficacy, safety or other risks associated with any detected or non-detected levels of any compounds reported herein. This Certificate shall not be reproduced except in full, without the written approval of DB Labs.